

JAC



JAC FORKLIFT

J Series Internal Combustion
Counterbalanced Forklift Truck

CPCD20J/CPCD25J/CPCD30J/CPCD35J



JAC HEAVY DUTY IMPORT & EXPORT CO.,LTD





**MATERIAL HANDLING EXPERTS
FROM AUTOMOTIVE QUALITY**

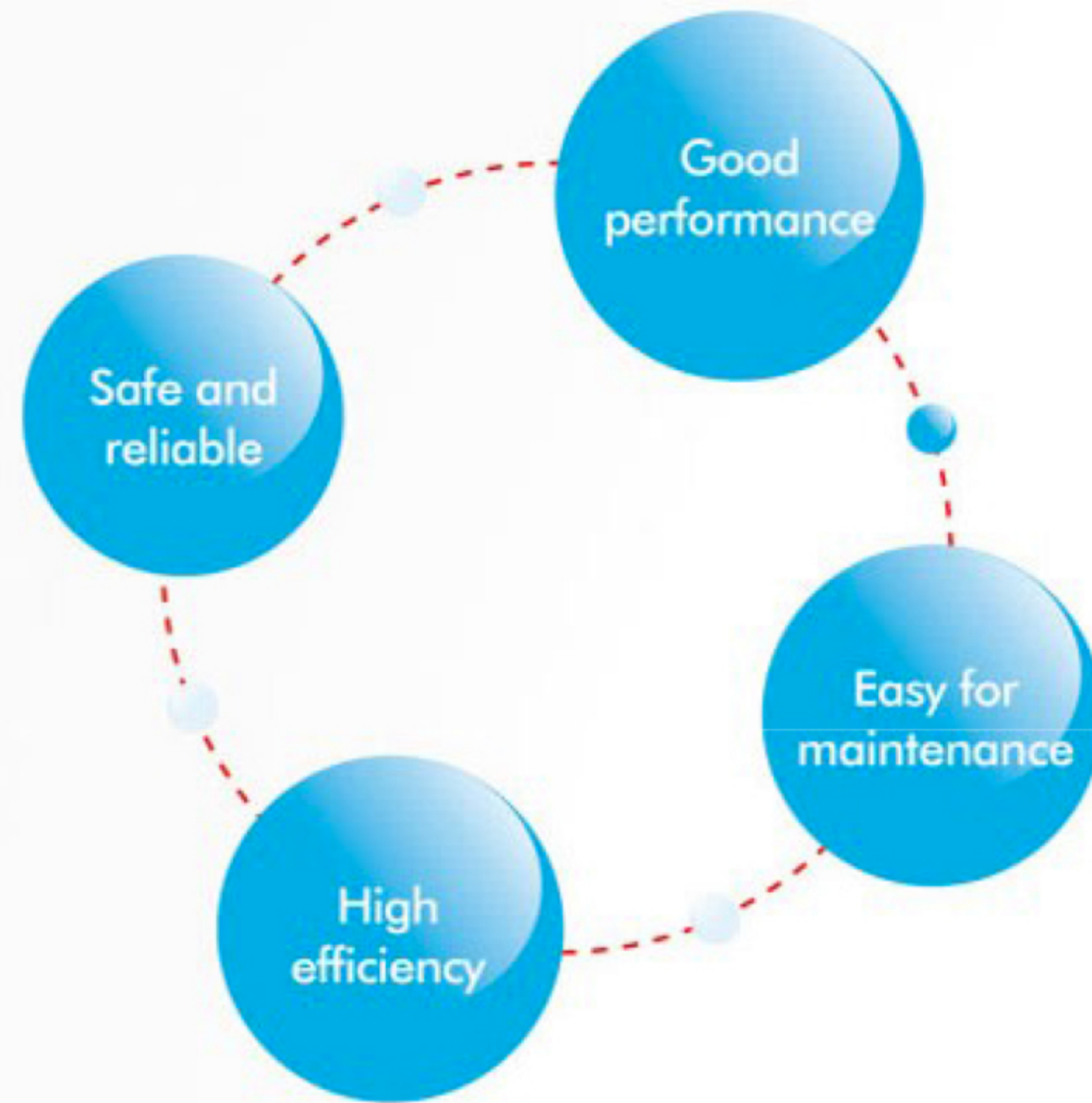


✉ contact@gmm-mg.com
📍 Route du Pape Alarobia (face sanifer)
☎ +261 32 03 111 33 / +261 32 03 111 34 / +261 32 03 111 36



Move forward

Selling Points Of J Series 2-3.5t Internal Combustion Counterbalanced Forklift Trucks



Four Highlights

No.1 Good performance



Regular ISUZU C240PKJ-30 engine, stable performance and has reached EURO III emission regulation.

◆ High traction

Over 23KN traction with full load.

◆ Climbing ability

It is able to climb a slope over 20% with full load.

◆ High speed

Traveling speed reached over 19km/h with full load.

◆ Load sensing hydraulic system

Load-sensitive hydraulic system ensures the fork to lift with full load while the engine is running idly so as to reduce fuel consumption.

◆ Stable

The center of gravity is moved to the rear and lower part so that the machine stands stable.



No.2 Safe and reliable

◆ Engine electrical system adopts water-proof connectors

The imported water-proof connectors are more reliable.
Water-proof grade Ip65



◆ Integrated cover of fuel and oil tanks to reduce leak





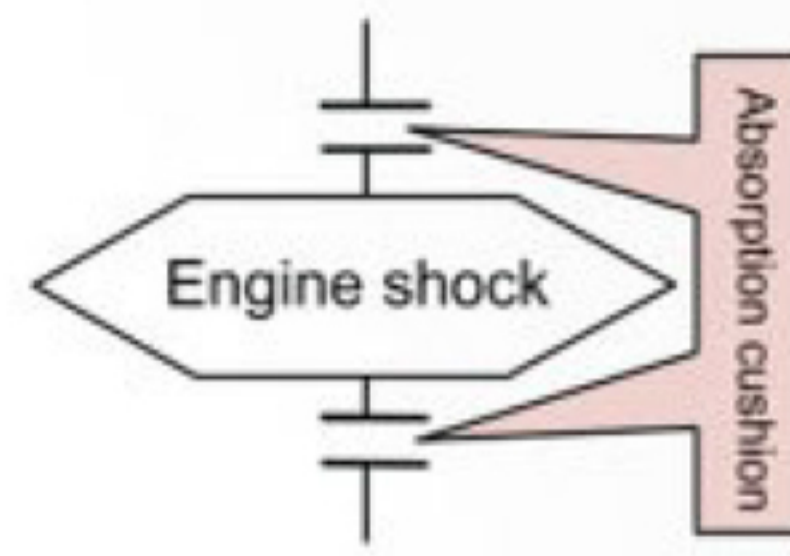
No.3 High efficiency

◆ Low noise

Closed construction and international noise absorber with acoustic wool.

◆ Low vibration

Industry-leading three-level shock absorption.



Level-1 shock absorption



Level-2 shock absorption



Level-3 shock absorption

◆ Broad visual field



Low instrument panel



Grid roof



Wide mast

◆ Spacious cab

Distance from head to rood > 200mm. Space for legs > 120mm. The seat can be adjusted for 150mm and the backrest can be adjusted for 90° .



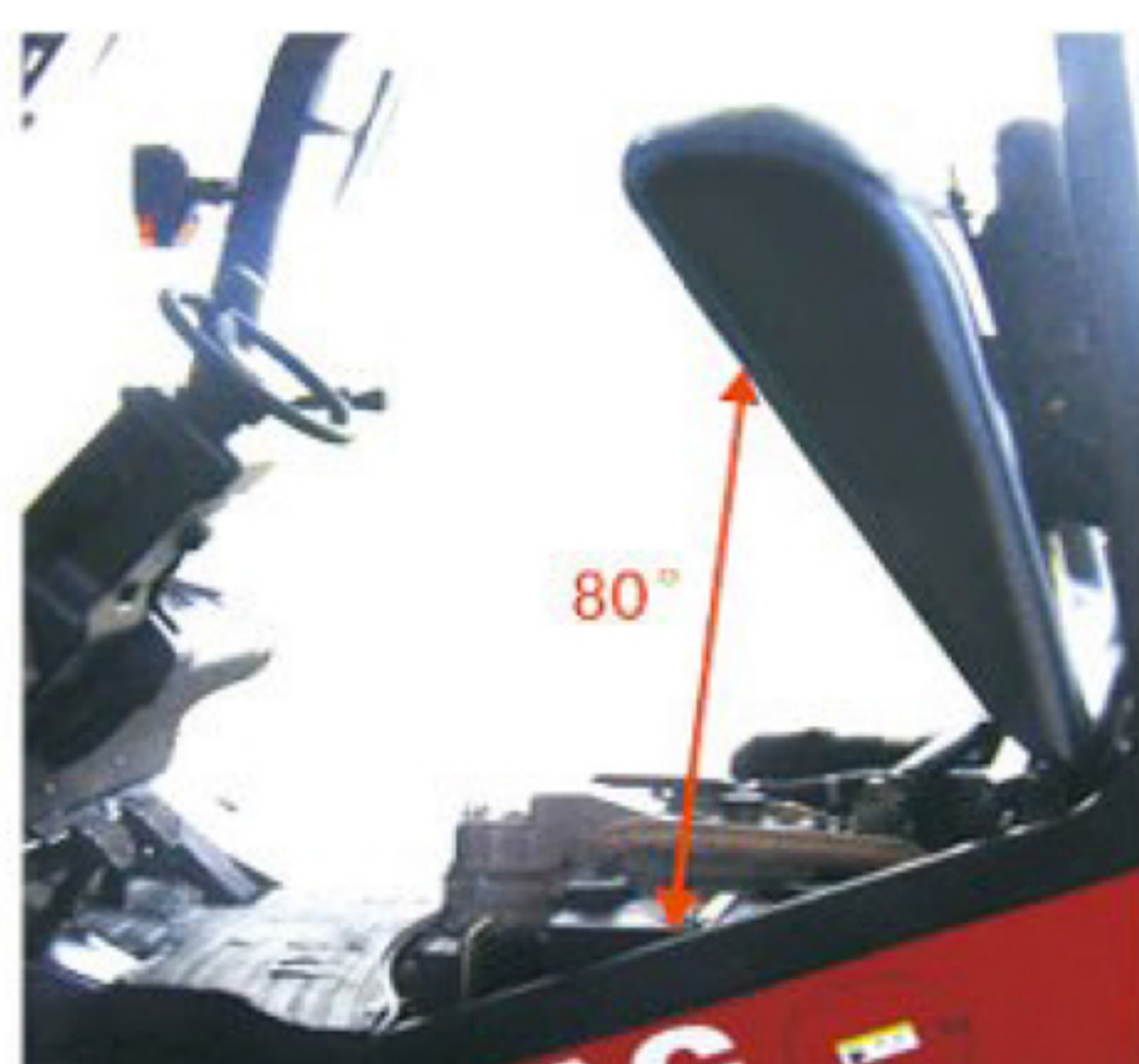
◆ Easy operation

Automobile hand brake

Electro-hydraulic directional valve and flaming out.



Large diameter steering cylinder requires less than 9N operation force.



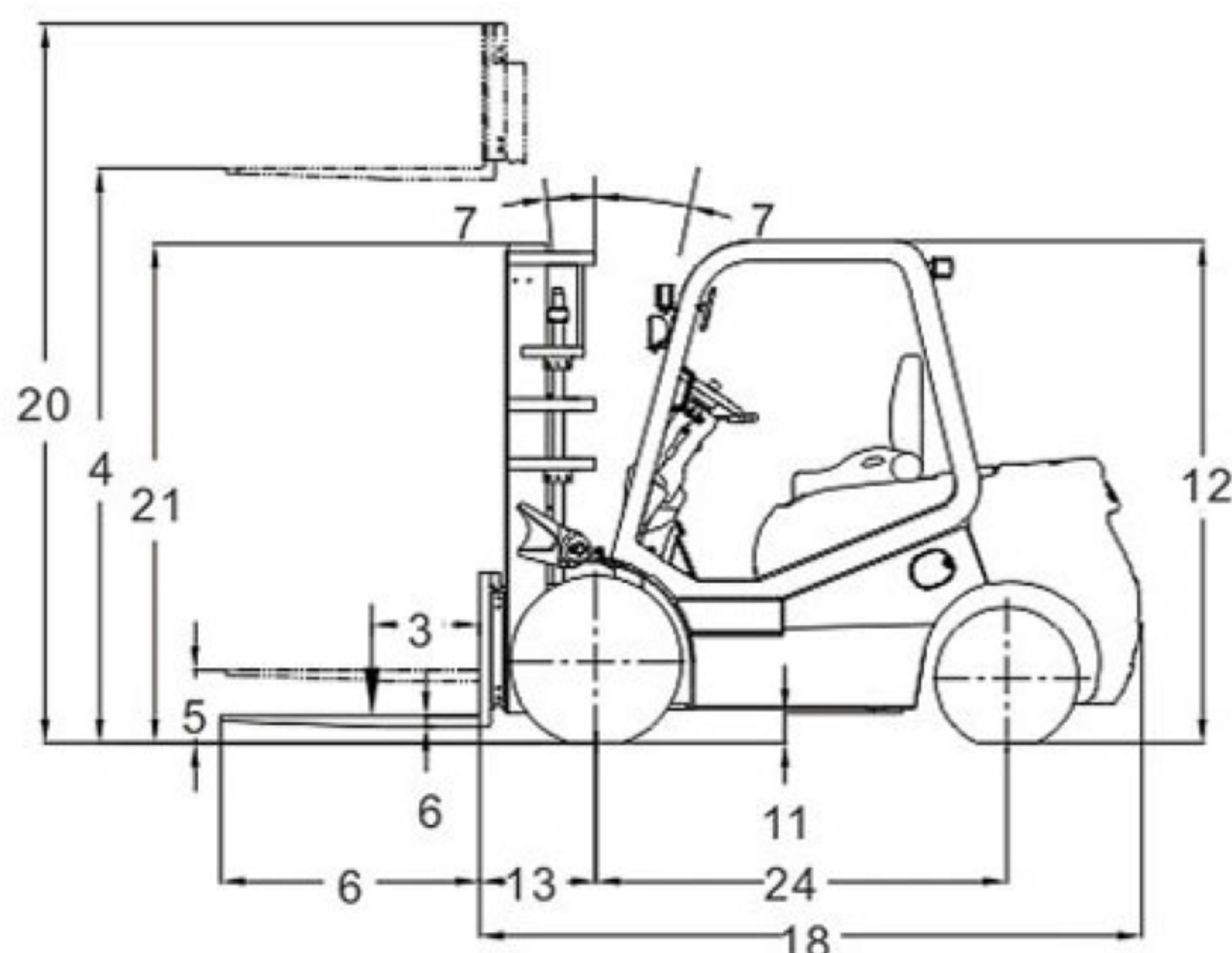
No.4 Easy for maintenance

◆ The engine hood can be lifted to 80° for easy maintenance.

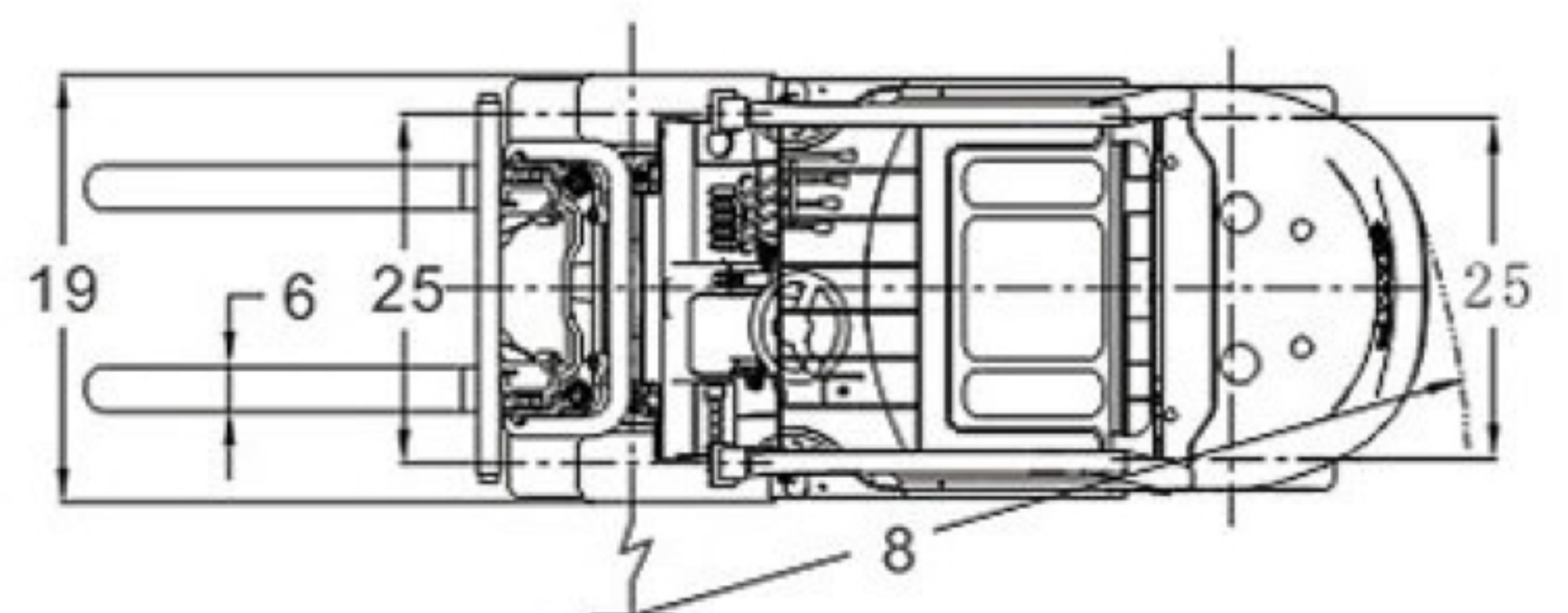
SPECIFICATIONS

| Model | | CPCD20J | CPCD25J | CPCD30J | CPCD35J |
|-------|--|------------------------|---|------------------|------------------|
| 1 | Power type | | Diesel | Diesel | Diesel |
| 2 | Rated load | kg | 2000 | 2500 | 3000 |
| 3 | Load center distance | mm | 500 | 500 | 500 |
| 4 | Lift height | mm | 3000 | 3000 | 3000 |
| 5 | Free lift height | mm | 190 | 190 | 130 |
| 6 | Fork size | L x W x T | 1070 x 122 x 40 | 1070 x 122 x 40 | 1070 x 125 x 45 |
| 7 | Mast tilt angle | FR/RR | 6/12 | 6/12 | 6/12 |
| 8 | Minimum turning radius | mm | 2245 | 2300 | 2500 |
| 9 | Minimum right angle stacking aisle width | mm | 4021 | 4076 | 4285 |
| 10 | Minimum right angle aisle width | mm | 2240 | 2295 | 2495 |
| 11 | Minimum ground clearance | mm | 115 | 115 | 135 |
| 12 | Height of overhead guard | mm | 2090 | 2090 | 2105 |
| 13 | Overhang(FR) | mm | 476 | 476 | 485 |
| 14 | Maximum travel speed | Full load | km/h | 19 | 19 |
| 15 | Maximum lift speed | Full load | mm/s | 530 | 490 |
| 16 | Maximum drawbar pull | Full load | KW | 17 | 17 |
| 17 | Gradeability | % | 20 | 20 | 20 |
| 18 | Overall length | Without forks | mm | 2535 | 2595 |
| 19 | Overall width | | mm | 1150 | 1150 |
| 20 | Fork height at maximum lift(with backrest) | | mm | 4020 | 4020 |
| 21 | Mast height | | mm | 1995 | 1995 |
| 22 | Tires | Front wheel | | 7.00-12-12PR | 7.00-12-12PR |
| 23 | | Rear wheel | | 6.00-9-10PR | 6.00-9-10PR |
| 24 | Wheelbase | | mm | 1600 | 1600 |
| 25 | Tread | Front wheel/rear wheel | mm | 970/970 | 970/970 |
| 26 | Self weight | Without load | Kg | 3400 | 3800 |
| 27 | Battery | Voltage/capacity | V/Ah | 12/80 | 12/80 |
| 28 | Engine | Model | | AK-C240PKJ-30 | AK-C240PKJ-30 |
| 29 | | Rated output | kw/r.p.m | 34.3 - 36.5/2500 | 34.3 - 36.5/2500 |
| 30 | | Rated torque | Nm/r.p.m | 137.7/1800 | 137.7/1800 |
| 31 | | Bore x stroke | mm | 86 x 102 | 86 x 102 |
| 32 | | Number of cylinders | | 4 | 4 |
| 33 | | Displacement | L | 2.369 | 2.369 |
| 34 | Fuel tank capacity | L | 60 | 60 | |
| 35 | Transmissions(FWD/RWD) | | 1/1 electro-hydraulic directional valve | | |
| 36 | Operating pressure | Mpa | 18.5 | | |
| 37 | Tire type(FR/RR) | | Pneumatic | Pneumatic | Pneumatic |
| 38 | Number of wheels(FR/RR) | Pcs | 2/2 | 2/2 | 2/2 |
| 39 | Lowering speed(full load) | mm/s | 450 | 450 | 500 |
| 40 | Lowering speed(no load) | mm/s | 400 | 400 | 490 |
| 41 | Axle load distribution(full load)(FR/RR) | kg | 4752/648 | 5544/756 | 6340/920 |
| 42 | Axle load distribution(fno load)(FR/RR) | kg | 1530/1870 | 1710/2090 | 1700/2580 |

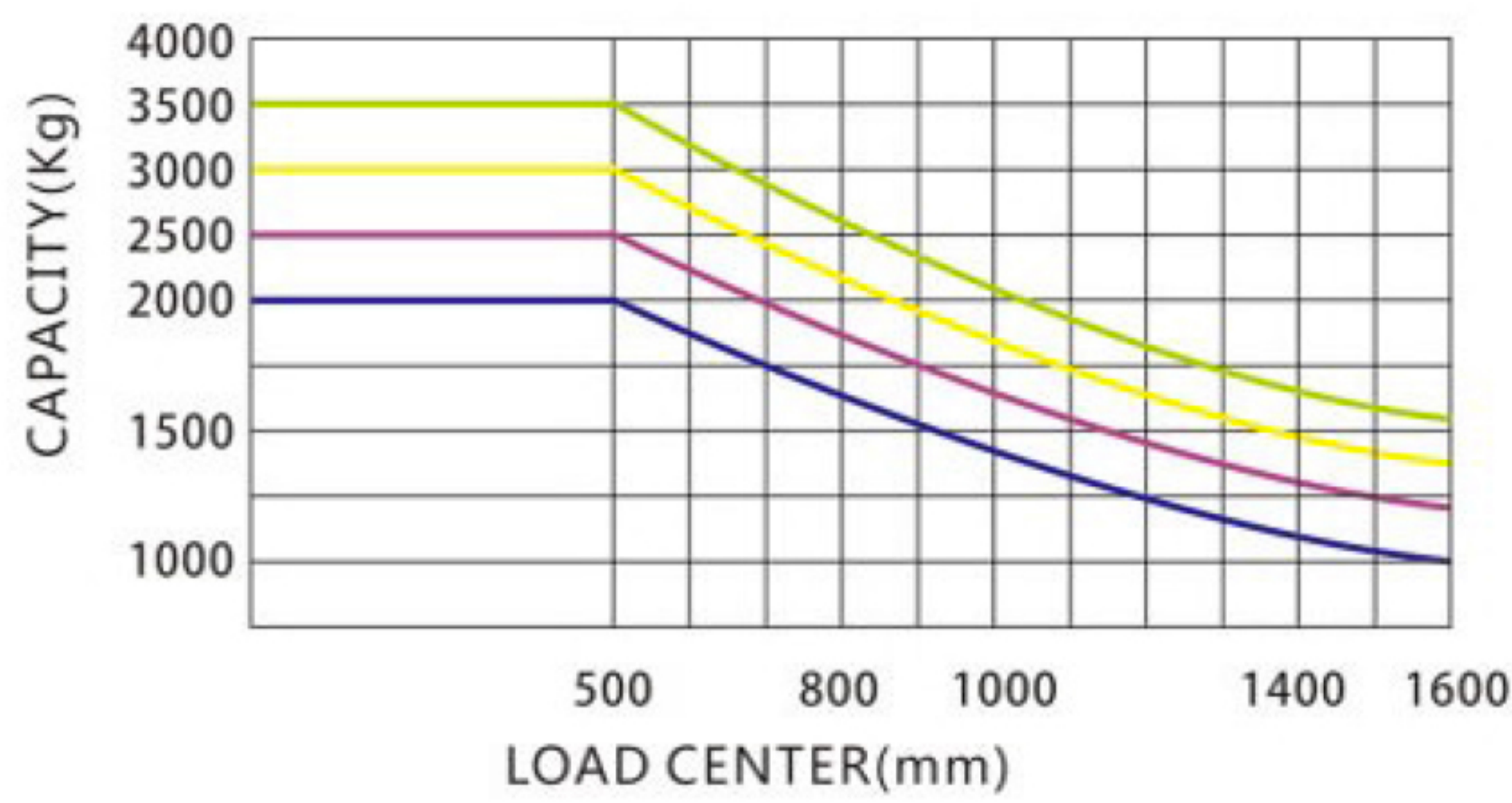
Calculation of minimum right angle stacking aisle width: Pallet size: 1100mm×1100mm, total clearance(FR/RR):100mm



DIMENSIONAL DRAWING



LOAD CAPACITY



- 3.5T
- 3.0T
- 2.5T
- 2.0T

Note: the vertical axis represents the CAPACITY and the horizontal axis represents the LOAD CENTER. The calculation of LOAD CENTER starts with the frontage of fork. The basic point of standard load refers to the center of a cube with load side 1000mm long. The CAPACITY will drop if the mast tilts forwards, a non-standard fork is adopted or the load width is excessive. The CAPACITY at the LOAD CENTER could be timely learnt of through the load curve.

STANDARD EQUIPMENT

- Torque converter dipstick
- Standard forks
- Standard seat
- Charging indication
- Backrest
- Backup light
- Backup buzzer
- Side mirror
- Light switch
- Lamp bracket
- Electric horn
- 2-piece selector valve
- Engine choke
- Direction switch
- Combination taillight
- Rain cover of overhead guard
- Durable rib tire
- Instrument
- WFOV mast
- Cable type parking brake
- Lift/tilt lever
- Lift circuit governor valve
- Drawbar pin
- Headlight
- Tilt adjustable steering wheel
- Tilt circuit self-locking valve
- Full hydraulic power steering
- Overhead air intake system
- Handle
- Coolant temperature gauge
- Tool kit
- Rubber pedal pad
- Cyclone air cleaner
- Pointer type instrument cluster
- Hydraulic return filter element
- Hydraulic suction filter element
- Hydraulic oil scale
- Oil pressure alarm
- Key switch
- electro-hydraulic directional valve
- Rotating beacon
- Turn signal light
- Brake

OPTIONS EQUIPMENT

- Side shifter
- Boom
- Jib
- Paper roll clamp
- Hinged forks
- 2(3)-section full free mast
- Lengthened forks
- Lengthened fork cover
- Cab
- Cab heater
- Cab A/C
- Windshield
- OPS seat
- Overhead exhaust system
- Exhaust purification muffler
- Muffler with spark arrester
- Fire extinguisher
- Solid tire
- LPG transfer device
- User specified color
- Colored tire(white, green)
- Small fan

ENGINE TYPE SELECTION AND PARAMETERS

| No. | Manufacturer | Power type | Model | Number of cylinders | Bore x stroke mm | Total displacement L | Rated output/RPM Kw/r.p.m | Rated torque/RPM Nm/r.p.m | Emission standard | Applicable forklift truck | | | | Applicable forklift truck(Tonnage range) |
|-----|-------------------|------------|--------------|---------------------|---------------------|-------------------------|------------------------------|------------------------------|---------------------|---------------------------|---------|---------|---------|--|
| | | | | | | | | | | CPCD20J | CPCD25J | CPCD30J | CPCD35J | |
| 1 | Nissan, Japan | Gasoline | K21/LPG | 4 | 83 x 100 | 2.164 | 31.2/2250 | 143.7/1600 | — | | | | | 2-2.5t |
| 2 | Nissan, Japan | Gasoline | K25/LPG | 4 | 89 x 100 | 2.488 | 37.4/2300 | 176.5/1600 | — | | | | | 2-3.5t |
| 3 | Isuzu, Japan | Diesel | C240PKJ-30 | 4 | 86 x 102 | 2.369 | 34.3 - 36.5/2500 | 137.7/1800 | EU stage IIIA | | | | | 2-3.5t |
| 4 | Isuzu, Japan | Diesel | 4JG2PE-01 | 4 | 95.4 x 107 | 3.059 | 44.9/2450 | 184.7/1700 | EU stage II | | | | | 3-3.5t |
| 5 | Yanmar, Japan | Diesel | 4TNE98 | 4 | 98 x 110 | 3.319 | 42.1/2300 | 177.6 - 196.3/1700 ± 100 | EU stage III, Tier3 | | | | | 3-3.5t |
| 6 | Yanmar, Japan | Diesel | 4TNV94L | 4 | 94 x 110 | 3.054 | 34.6/2400 | 191.5-208.5/150 | EU stage IIIA | | | | | 3-3.5t |
| 7 | Mitsubishi, Japan | Diesel | S4S-455 | 4 | 94 x 120 | 3.330 | 35.3/2250 | 170/1700 | EU stage IIIA | | | | | 3-3.5t |
| 8 | Xinchang, China | Diesel | C490BPG-30 | 4 | 90 x 105 | 2.670 | 35.3/2250 | 156-1700-1900 | EU stage III | | | | | 2-3.5t |
| 9 | Xinchang, China | Diesel | A495BPG-510A | 4 | 95 x 105 | 2.980 | 42/2650 | 174/1800-2000 | Nationa Stage II | | | | | 3-3.5t |
| 10 | JAC, China | Diesel | 4DC1 | 4 | 94.5 x 107 | 3.002 | 45/2500 | 185/1600-1800 | Nationa Stage II | | | | | 2-3.5t |
| 11 | Xinchang, China | Diesel | 4D27G31 | 4 | 90 x 105 | 2.670 | 36.8/2500 | 156-1700-1900 | Nationa Stage III | | | | | 2-3.5t |
| 12 | Xinchang, China | Diesel | 4D30G31 | 4 | 95 x 105 | 2.980 | 36.8/2650 | 174/1800-2000 | Nationa Stage III | | | | | 3-3.5t |

SPECIFICATION TABLE OF FORKS

| Applicable models | Standard equipment | Width W mm | Thickness T mm | Length series | | | | | | | | | Mounting class |
|-------------------|--------------------|------------------|----------------------|---------------|-----|------|------|------|------|------|------|------|----------------|
| | LxWxT | | | L | | | | | | | | | |
| | mm | mm | | | | | | | | | | | |
| 2t | 1070x122x40 | 122 | 40 | 770 | 920 | 1070 | 1220 | 1370 | 1520 | 1670 | 1820 | 1970 | II |
| 2.5t | 1070x122x40 | 122 | 40 | 770 | 920 | 1070 | 1220 | 1370 | 1520 | 1670 | 1820 | 1970 | II |
| 3t | 1070x125x45 | 125 | 45 | 770 | 920 | 1070 | 1220 | 1370 | 1520 | 1670 | 1820 | 1970 | III |
| 3.5t | 1070x125x50 | 125 | 50 | 770 | 920 | 1070 | 1220 | 1370 | 1520 | 1670 | 1820 | 1970 | III |

2M WFOV BASIC MAST

| Lift height | Load capacity | | | | | | | | Overall height of mast | | | | | | | | | | | | | | |
|-------------|---------------|-----------|-------------|-----------|-------------|-----------|-------------|-----------|------------------------|----------------|------------------|-----------------|------|----------------------|----------------|------------------|-----------------|------|----------------------|----------------|------------------|-----------------|------|
| | | | | | | | | | 2-2.5t | | | | | | 3t | | | | | | 3.5t | | |
| | 2t | | 2.5t | | 3t | | 3.5t | | Forks(on the ground) | Fully extended | | Mast tilt angle | | Forks(on the ground) | Fully extended | | Mast tilt angle | | Forks(on the ground) | Fully extended | | Mast tilt angle | |
| | Single tire | Dual tire | Single tire | Dual tire | Single tire | Dual tire | Single tire | Dual tire | | With backrest | Without backrest | FR/RR | | | With backrest | Without backrest | FR/RR | | | With backrest | Without backrest | FR/RR | |
| mm | kg | kg | kg | kg | kg | kg | kg | mm | mm | mm | ° | ° | mm | mm | mm | ° | ° | mm | mm | mm | ° | ° | |
| 2000 | 2000 | 2000 | 2500 | 2500 | 3000 | 3000 | 3500 | 3500 | 1495 | 3015 | 2635 | 6/12 | 6/12 | 1575 | 3230 | 2780 | 6/12 | 6/12 | 1620 | 3220 | 2770 | 6/12 | 6/12 |
| 2500 | 2000 | 2000 | 2500 | 2500 | 3000 | 3000 | 3500 | 3500 | 1745 | 3515 | 3135 | 6/12 | 6/12 | 1825 | 3730 | 3280 | 6/12 | 6/12 | 1870 | 3720 | 3270 | 6/12 | 6/12 |
| 2700 | 2000 | 2000 | 2500 | 2500 | 3000 | 3000 | 3500 | 3500 | 1845 | 3715 | 3335 | 6/12 | 6/12 | 1925 | 3930 | 3480 | 6/12 | 6/12 | 1970 | 3920 | 3470 | 6/12 | 6/12 |
| 3000 | 2000 | 2000 | 2500 | 2500 | 3000 | 3000 | 3500 | 3500 | 1995 | 4015 | 3635 | 6/12 | 6/12 | 2075 | 4230 | 3780 | 6/12 | 6/12 | 2120 | 4220 | 3770 | 6/12 | 6/12 |
| 3300 | 2000 | 2000 | 2500 | 2500 | 3000 | 3000 | 3500 | 3500 | 2145 | 4315 | 3935 | 6/12 | 6/12 | 2225 | 4530 | 4080 | 6/12 | 6/12 | 2270 | 4520 | 4070 | 6/12 | 6/12 |
| 3500 | 2000 | 2000 | 2500 | 2500 | 3000 | 3000 | 3500 | 3500 | 2245 | 4505 | 4035 | 6/12 | 6/12 | 2325 | 4730 | 4280 | 6/12 | 6/12 | 2370 | 4720 | 4270 | 6/12 | 6/12 |
| 3600 | 2000 | 2000 | 2500 | 2500 | 3000 | 3000 | 3500 | 3500 | 2295 | 4605 | 4235 | 6/12 | 6/12 | 2375 | 4830 | 4380 | 6/12 | 6/12 | 2420 | 4820 | 4370 | 6/12 | 6/12 |
| 3700 | 2000 | 2000 | 2500 | 2500 | 3000 | 3000 | 3500 | 3500 | 2345 | 4715 | 4335 | 6/6 | 6/12 | 2425 | 4930 | 4480 | 6/6 | 6/12 | 2470 | 4920 | 4470 | 6/6 | 6/12 |
| 4000 | 2000 | 2000 | 2500 | 2500 | 2850 | 3000 | 3500 | 3500 | 2545 | 5015 | 4635 | 6/6 | 6/12 | 2625 | 5230 | 4780 | 6/6 | 6/12 | 2670 | 5220 | 4770 | 6/6 | 6/12 |
| 4250 | 1900 | 2000 | 2100 | 2500 | 2600 | 3000 | 3300 | 3500 | 2670 | 5265 | 4885 | 6/6 | 6/12 | 2750 | 5480 | 5030 | 6/6 | 6/12 | 2795 | 5470 | 5020 | 6/6 | 6/12 |
| 4500 | 1800 | 1900 | 1800 | 2400 | 2600 | 3000 | 3050 | 3500 | 2795 | 5505 | 5135 | 6/6 | 6/12 | 2875 | 5730 | 5280 | 6/6 | 6/6 | 2920 | 5720 | 5270 | 6/6 | 6/6 |
| 5000 | 1300 | 1700 | 1300 | 2200 | 2100 | 2850 | 2600 | 3150 | 3045 | 6015 | 5635 | 6/6 | 6/6 | 3125 | 6230 | 5780 | 6/6 | 6/6 | 3170 | 6220 | 5770 | 6/6 | 6/6 |
| 5500 | — | 1500 | — | 1700 | — | 2400 | — | 2850 | 3345 | 6515 | 6135 | — | 3/6 | 3425 | 6730 | 6280 | — | 3/6 | 3470 | 6720 | 6270 | — | 3/6 |
| 6000 | — | 1300 | — | 1400 | — | 2000 | — | 2850 | 3595 | 7015 | 6635 | — | 3/6 | 3675 | 7230 | 6780 | — | 3/6 | 3720 | 7220 | 6770 | — | 3/6 |

BM 2-STAGE FULL FREE MAST

| Lift height | Load capacity | | | | | | | | Overall height of mast | | | | | | | | | | | | | | | | | | | | |
|-------------|---------------|-----------|-------------|-----------|-------------|-----------|-------------|-----------|------------------------|----------------|------------------|---------------|------------------|-----------------|------|----------------------|----------------|------------------|---------------|------------------|-----------------|------|----------------------|----------------|------------------|---------------|------------------|-----------------|------|
| | | | | | | | | | 2-2.5t | | | | | | 3t | | | | | | 3.5t | | | | | | | | |
| | 2t | | 2.5t | | 3t | | 3.5t | | Forks(on the ground) | Fully extended | | Free | | Mast tilt angle | | Forks(on the ground) | Fully extended | | Free | | Mast tilt angle | | Forks(on the ground) | Fully extended | | Free | | Mast tilt angle | |
| | Single tire | Dual tire | Single tire | Dual tire | Single tire | Dual tire | Single tire | Dual tire | | With backrest | Without backrest | With backrest | Without backrest | FR/RR | | | With backrest | Without backrest | With backrest | Without backrest | FR/RR | | | With backrest | Without backrest | With backrest | Without backrest | FR/RR | |
| mm | kg | kg | kg | kg | kg | kg | kg | mm | mm | mm | mm | mm | ° | ° | mm | mm | mm | mm | mm | ° | ° | mm | mm | mm | mm | mm | ° | ° | |
| 2000 | 2000 | 2000 | 2500 | 2500 | 3000 | 3000 | 3500 | 3500 | 1495 | 2995 | 2595 | 460 | 810 | 6/12 | 6/12 | 1575 | 3270 | 2780 | 345 | 835 | 6/12 | 6/12 | 1575 | 3270 | 2780 | 345 | 835 | 6/12 | 6/12 |
| 2500 | 2000 | 2000 | 2500 | 2500 | 3000 | 3000 | 3500 | 3500 | 1795 | 3495 | 3095 | 710 | 1060 | 6/12 | 6/12 | 1825 | 3770 | 3280 | 595 | 1085 | 6/12 | 6/12 | 1825 | 3770 | 3280 | 595 | 1085 | 6/12 | 6/12 |
| 2700 | 2000 | 2000 | 2500 | 2500 | 3000 | 3000 | 3500 | 3501 | 1845 | 3695 | 3295 | 810 | 1160 | 6/12 | 6/12 | 1925 | 3970 | 3480 | 695 | 1185 | 6/12 | 6/12 | 1925 | 3970 | 3480 | 695 | 1185 | 6/12 | 6/12 |
| 3000 | 2000 | 2000 | 2500 | 2500 | 3000 | 3000 | 3500 | 3502 | 1995 | 3995 | 3595 | 960 | 1310 | 6/12 | 6/12 | 2075 | 4270 | 3780 | 845 | 1335 | 6/12 | 6/12 | 2075 | 4270 | 3780 | 845 | 1335 | 6/12 | 6/12 |
| 3300 | 2000 | 2000 | 2500 | 2500 | 3000 | 3000 | 3500 | 3503 | 2145 | 4295 | 3895 | 1110 | 1460 | 6/12 | 6/12 | 2225 | 4570 | 4080 | 995 | 1485 | 6/12 | 6/12 | 2225 | 4570 | 4080 | 995 | 1485 | 6/12 | 6/12 |
| 3500 | 2000 | 2000 | 2500 | 2500 | 3000 | 3000 | 3500 | 3504 | 2245 | 4495 | 4095 | 1210 | 1560 | 6/12 | 6/12 | 2325 | 4770 | 4280 | 1095 | 1585 | 6/12 | 6/12 | 2325 | 4770 | 4280 | 1095 | 1585 | 6/12 | 6/12 |
| 3600 | 2000 | 2000 | 2500 | 2500 | 3000 | 3000 | 3500 | 3505 | 2295 | 4595 | 4195 | 1260 | 1610 | 6/12 | 6/12 | 2375 | 4870 | 4380 | 1145 | 1635 | 6/12 | 6/12 | 2375 | 4870 | 4380 | 1145 | 1635 | 6/12 | 6/12 |
| 3700 | 2000 | 2000 | 2500 | 2500 | 3000 | 3000 | 3500 | 3506 | 2345 | 4695 | 4295 | 1310 | 1660 | 6/6 | 6/12 | 2425 | 4970 | 4480 | 1195 | 1685 | 6/6 | 6/12 | 2425 | 4970 | 4480 | 1195 | 1685 | 6/6 | 6/12 |
| 4000 | 2000 | 2000 | 2500 | 2500 | 2850 | 3000 | 3500 | 3507 | 2545 | 4995 | 4595 | 1510 | 1860 | 6/6 | 6/12 | 2625 | 5270 | 4780 | 1396 | 1885 | 6/6 | 6/12 | 2625 | 5270 | 4780 | 1396 | 1885 | 6/6 | 6/12 |
| 4250 | 1900 | 2000 | 2100 | 2500 | 2600 | 3000 | 3300 | 3508 | 2670 | 5245 | 4845 | 1635 | 1985 | 6/6 | 6/12 | 2750 | 5520 | 5030 | 1520 | 2010 | 6/6 | 6/12 | 2750 | 5520 | 5030 | 1520 | 2010 | 6/6 | 6/12 |
| 4500 | 1800 | 1900 | 1800 | 2400 | 2600 | 3000 | 3050 | 3509 | 2795 | 5495 | 5095 | 1760 | 2110 | 6/6 | 6/6 | 2875 | 5770 | 5280 | 1645 | 2135 | 6/6 | 6/6 | 2875 | 5770 | 5280 | 1645 | 2135 | 6/6 | 6/6 |

CM 3-STAGE FULL FREE MAST

| Lift height | Load capacity | | | | | | | | Overall height of mast | | | | | | | | | | | | | | | | | | | | |
|-------------|---------------|-----------|-------------|-----------|-------------|-----------|-------------|-----------|------------------------|----------------|------------------|---------------|------------------|-----------------|-----|----------------------|----------------|------------------|---------------|------------------|-----------------|-----|----------------------|----------------|------------------|---------------|------------------|-----------------|-----|
| | | | | | | | | | 2-2.5t | | | | | | 3t | | | | | | 3.5t | | | | | | | | |
| | 2t | | 2.5t | | 3t | | 3.5t | | Forks(on the ground) | Fully extended | | Free | | Mast tilt angle | | Forks(on the ground) | Fully extended | | Free | | Mast tilt angle | | Forks(on the ground) | Fully extended | | Free | | Mast tilt angle | |
| | Single tire | Dual tire | Single tire | Dual tire | Single tire | Dual tire | Single tire | Dual tire | | With backrest | Without backrest | With backrest | Without backrest | FR/RR | | | With backrest | Without backrest | With backrest | Without backrest | FR/RR | | | With backrest | Without backrest | With backrest | Without backrest | FR/RR | |
| mm | kg | kg | kg | kg | kg | kg | kg | mm | mm | mm | mm | mm | ° | ° | mm | mm | mm | mm | mm | ° | ° | mm | mm | mm | mm | mm | ° | ° | |
| 3600 | 1900 | 1900 | 2400 | 2400 | 2900 | 3000 | 3400 | 3400 | 1745 | 4595 | 4215 | 750 | 1130 | 6/6 | 6/6 | 1800 | 4830 | 4340 | 520 | 1010 | 6/6 | 6/6 | 1800 | 4830 | 4340 | 520 | 1010 | 6/6 | 6/6 |
| 4000 | 1900 | 1900 | 2400 | 2400 | 2850 | 3000 | 3350 | 3400 | 1880 | 4995 | 4615 | 885 | 1265 | 6/6 | 6/6 | 1935 | 5230 | 4740 | 705 | 1195 | 6/6 | 6/6 | 1935 | 5230 | 4740 | 705 | 1195 | 6/6 | 6/6 |
| 4200 | 1850 | 1900 | 2400 | 2400 | 2800 | 3000 | 3300 | 3400 | 1945 | 5195 | 4815 | 950 | 1330 | 6/6 | 6/6 | 2000 | 5430 | 4940 | 770 | 1260 | 6/6 | 6/6 | 2000 | 5430 | 4940 | 770 | 1260 | 6/6 | 6/6 |
| 4350 | 1700 | 1900 | 2400 | 2400 | 2700 | 2900 | 3200 | 3400 | 1995 | 5395 | 4965 | 1000 | 1380 | 6/6 | 6/6 | 2050 | 5580 | 5090 | 820 | 1310 | 6/6 | 6/6 | 2050 | 5580 | 5090 | 820 | 1310 | 6/6 | 6/6 |
| 4500 | 1700 | 1800 | 1700 | 2300 | 2600 | 2800 | 3100 | 3300 | 2045 | 5495 | 5115 | 1050 | 1430 | 6/6 | 6/6 | 2100 | 5730 | 5240 | 870 | 1360 | 6/6 | 6/6 | 2100 | 5730 | 5240 | 870 | 1360 | 6/6 | 6/6 |
| 4800 | 1700 | 1800 | 1700 | 2300 | 2400 | 2700 | 2900 | 3200 | 2145 | 5795 | 5445 | 1150 | 1530 | 6/6 | 6/6 | 2200 | 6030 | 5540 | 970 | 1460 | 6/6 | 6/6 | 2200 | 6030 | 5540 | 970 | 1460 | 6/6 | 6/6 |
| 5000 | 1500 | 1750 | 1500 | 2250 | 2100 | 2350 | 2600 | 2900 | 2215 | 5995 | 5615 | 1220 | 1600 | 6/6 | 6/6 | 2265 | 6230 | 5740 | 1035 | 1525 | 6/6 | 6/6 | 2265 | 6230 | 5740 | 1035 | 1525 | 6/6 | 6/6 |
| 5500 | 1200 | 1700 | 1200 | 2150 | 2000 | 2300 | 2500 | 2800 | 2330 | 6495 | 6115 | 1335 | 1715 | 6/6 | 6/6 | 2435 | 6730 | 6240 | 1255 | 1745 | 3/6 | 6/6 | 2435 | 6730 | 6240 | 1255 | 1745 | 3/6 | 6/6 |
| 6000 | 800 | 1600 | 800 | 1800 | 1300 | 1950 | 1750 | 2500 | 2395 | 6995 | 6615 | 1400 | 1780 | 3/6 | 6/6 | 2600 | 7230 | 6740 | 1370 | 1860 | 3/6 | 6/6 | 2600 | 7230 | 6740 | 1370 | 1860 | 3/6 | 6/6 |