

JAC



JAC FORKLIFT

H Series Internal Combustion
Counterbalanced Forklift Truck

CPC42H/CPC45H/CPCD45H/CPC50H/CPCD50H



JAC HEAVY DUTY IMPORT&EXPORT CO.,LTD



Transport expert roots in automobile quality



✉ contact@gmm-mg.com
📍 Route du Pape Alarobia (face sanifer)
☎ +261 32 03 111 33 / +261 32 03 111 34 / +261 32 03 111 36



Move forward

Selling Points of H Series 4.2-5 Ton Internal Combustion Counterbalance Forklift



No.1 Excellent operating performance

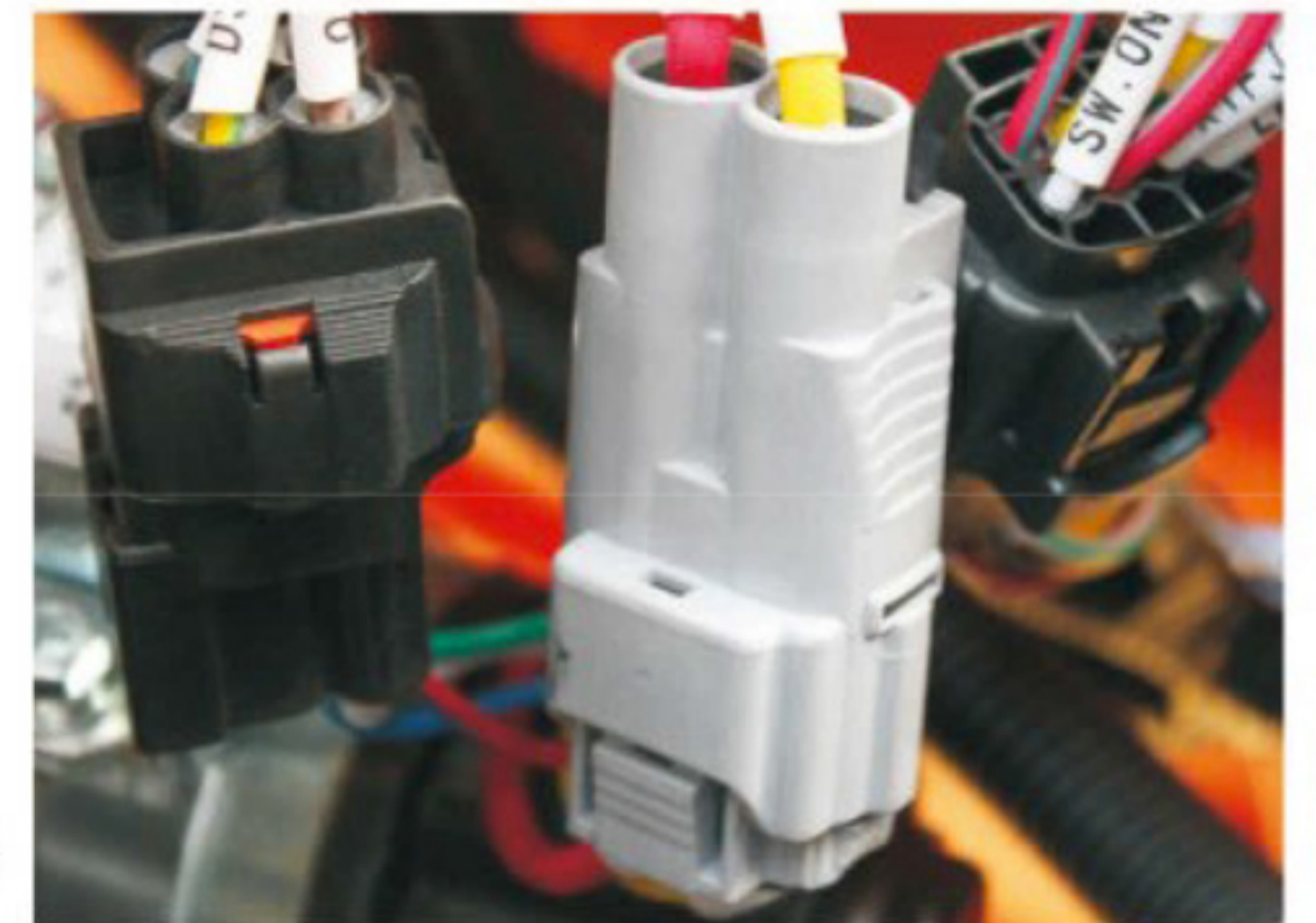
Low fuel consumption
The fuel consumption at maximum running speed under full load (4.5 tons) is 6.5L/h, so that the energy will be saved and the environment will be protected.

Load sensing hydraulic system
Load-sensitive hydraulic system ensures the fork to lift with full load while the engine is running idly so as to reduce fuel consumption.

Improved longitudinal stability of the forklift

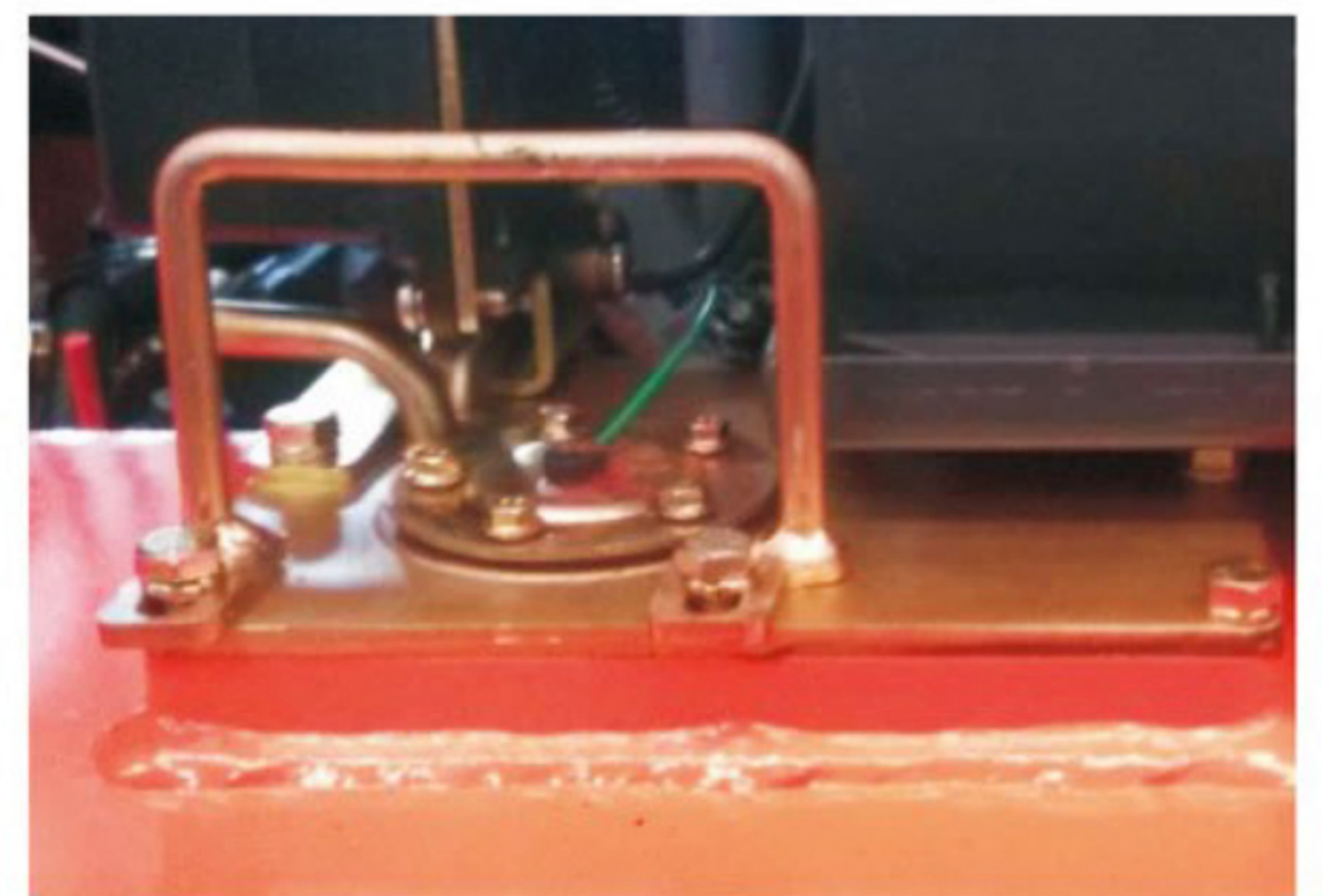


Engine electrical system adopts water-proof connectors
The imported water-proof connectors are more reliable.

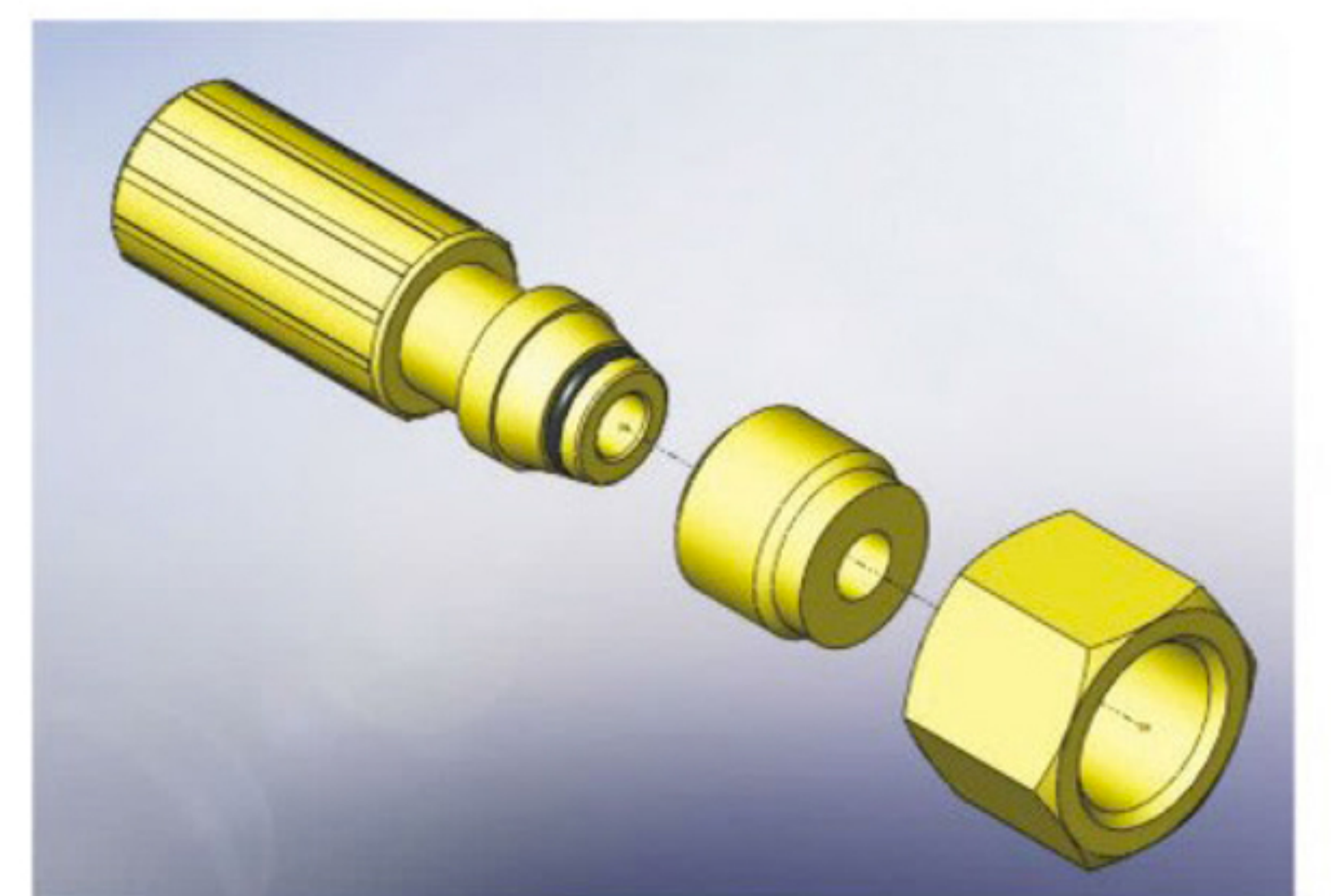


Water-proof grade Ip65

Reliable sealing of oil tank cover
The cover adopts flange sealing against leak.



24° cone + O ring
The hydraulic system adopts the most advanced sealing.



No.2 High safety and reliability

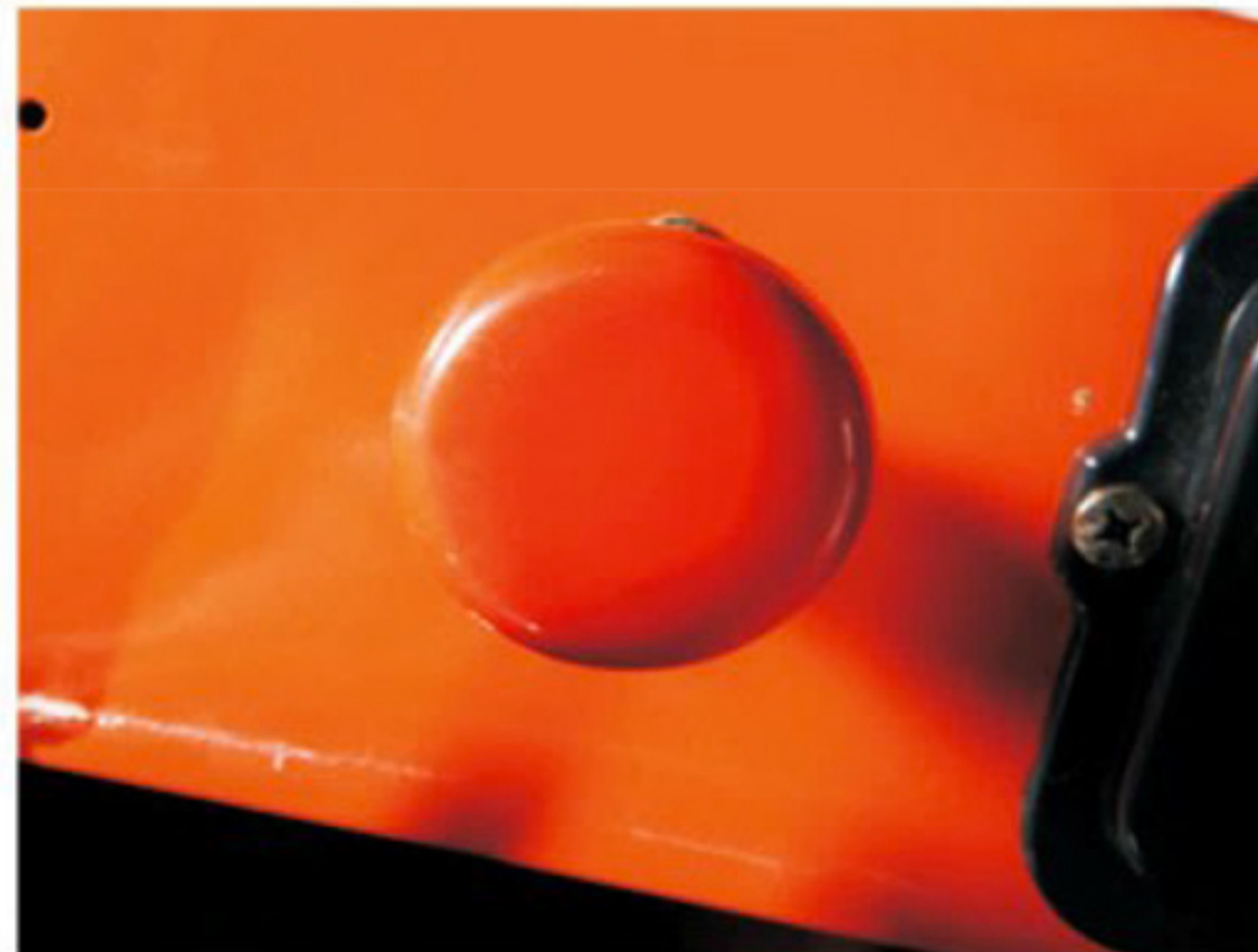
● **High-mount air intake**

Mechanical gear: The air intake is realized with two high-mounted air filters, so as to prolong the service life of engine.



● **Emergency stop switch**

Mechanical gear: One-button-based control, which can effectively protect the electrical system.



● **The gear-shift force is low**

Provided as standard configuration, the synchronizer-based transmission is easy to operate and can save labor.



No.3 Comfortable driving

● **Wide mast**

Wide mast broadens visual field.



● **Labor-saving clutch control mechanism**

The control mechanism adopts high lever ratio, so that it is easy and convenient to operate.

● **Large opening angle of engine hood**

The engine hood can be lifted to 80° for easy maintenance.



● **The 1st shaft of transmission is telescopic, so that the replacement of pressure disc and friction disc can be realized without removal of engine**

● **Early-warning of instruments service is provided**

Regular early-warning of instruments service realizes intelligent service.



Four Selling Points of H Series Internal Combustion Counterbalance Forklift

2M WFOV BASIC MAST

Lift height	Load capacity		Overall height of mast			Mast tilt angle			
			Forks(on the ground)	Fully extended		Hydraulic		Mechanical	
				With backrest	Without backrest	FR/RR		FR/RR	
Front wheel	Single tire	Dual tire				Single tire	Dual tire	Single tire	Dual tire
mm	kg	kg	mm	mm	mm	°	°	°	°
2500	4500	4500	2015	3730	3380	6/12	6/12	8/10	8/10
2700	4500	4500	2115	3930	3580	6/12	6/12	8/10	8/10
3000	4500	4500	2265	4230	3880	6/12	6/12	8/10	8/10
3300	4500	4500	2415	4530	4180	6/12	6/12	8/10	8/10
3500	4500	4500	2515	4730	4380	6/12	6/12	8/10	8/10
3750	4500	4500	2640	4980	4630	6/12	6/12	8/10	8/10
4000	4500	4500	2815	5230	4880	6/12	6/12	8/10	8/10
4250	4500	4500	2940	5480	5130	6/12	6/12	8/10	8/10
4500	4300	4500	3065	5730	5380	6/12	6/12	6/6	8/10
4750	4100	4500	3190	5980	5630	6/12	6/12	6/6	8/10
5000	3900	4300	3315	6230	5880	6/6	6/12	6/6	8/10
5500	3600	3900	3615	6730	6380	3/6	6/6	3/6	6/6
6000	3300	3500	3865	7230	6880	3/6	6/6	3/6	6/6

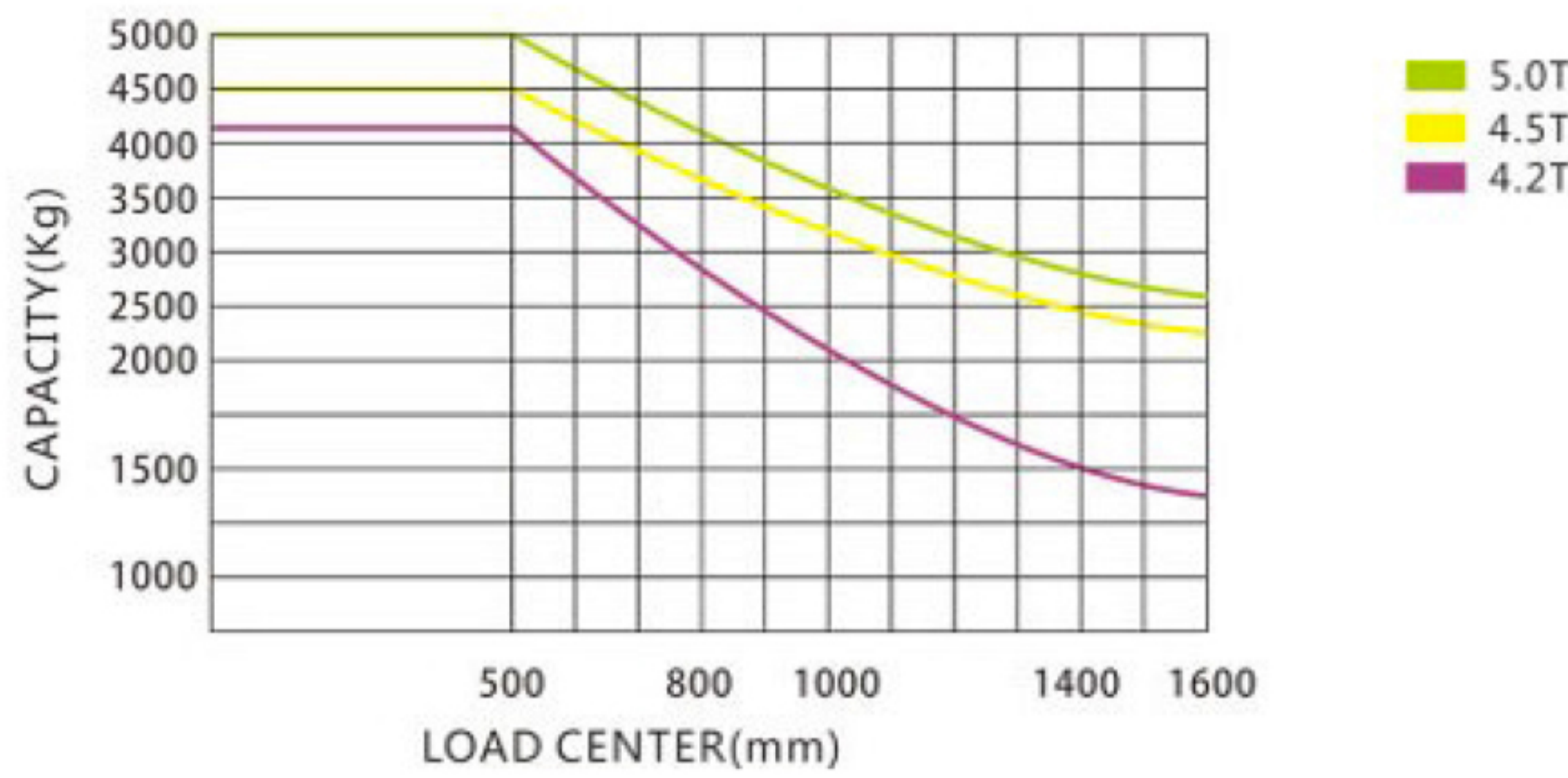
BM 2-STAGE FULL FREE MAST

Lift height	Load capacity		Overall height of mast				Mast tilt angle				
			Forks(on the ground)	Fully extended		Free		Hydraulic		Mechanical	
				With backrest	Without backrest	With backrest	Without backrest	FR/RR		FR/RR	
Front wheel	Single tire	Dual tire					Single tire	Dual tire	Single tire	Dual tire	
mm	kg	kg	mm	mm	mm	mm	mm	mm	°	°	
2500	4500	4500	2015	3730	3380	2015	2365	6/12	8/10		
2700	4500	4500	2115	3930	3580	2115	2465	6/12	8/10		
3000	4500	4500	2265	4230	3880	2265	2615	6/12	8/10		
3300	4500	4500	2415	4530	4180	2415	2765	6/12	8/10		
3500	4500	4500	2515	4730	4380	2515	2865	6/12	8/10		
3600	4500	4500	2640	4830	4480	2640	2990	6/12	8/10		
3700	4500	4500	2815	4930	4580	2815	3165	6/12	8/10		
4000	4500	4500	2940	5230	4880	2940	3290	6/12	8/10		
4250	4300	4500	3065	5480	5130	3065	3415	6/12	8/10		
4500	4100	4500	3190	5730	5380	3190	3540	6/12	8/10		

CM 3-STAGE FULL FREE MAST

Lift height	Load capacity		Overall height of mast				Mast tilt angle				
			Forks(on the ground)	Fully extended		Free		Hydraulic		Mechanical	
				With backrest	Without backrest	With backrest	Without backrest	FR/RR		FR/RR	
Front wheel	Single tire	Dual tire					Single tire	Dual tire	Single tire	Dual tire	
mm	kg	kg	mm	mm	mm	mm	mm	mm	°	°	
3600	4100	4100	2010	4910	4560	1165	1515	6/6	6/6		
4000	4100	4100	2145	5310	4960	1165	1515	6/6	6/6		
4200	4100	4100	2210	5510	5160	1165	1515	6/6	6/6		
4350	4100	4100	2260	5660	5310	1165	1515	6/6	6/6		
4500	4100	4100	2310	5810	5460	1315	1665	6/6	6/6		
4800	4100	4100	2410	6110	5760	1415	1765	6/6	6/6		
5000	3750	3900	2480	6310	5960	1465	1815	6/6	6/6		
5500	3250	3800	2645	6810	6460	1515	1865	3/6	3/6		
6000	2750	3500	2860	7310	6960	1665	2015	3/6	3/6		
6500	2300	3100	—	—	—	—	—	3/6	3/6		
7000	2000	2750	—	—	—	—	—	3/6	3/6		

LOAD CAPACITY



Note: the vertical axis represents the CAPACITY and the horizontal axis represents the LOAD CENTER. The calculation of LOAD CENTER starts with the frontage of fork. The basic point of standard load refers to the center of a cube with load side 1000mm long. The CAPACITY will drop if the mast tilts forwards, a non-standard fork is adopted or the load width is excessive. The CAPACITY at the LOAD CENTER could be timely learnt of through the load curve.

STANDARD EQUIPMENT

- Standard forks
- Lamp bracket
- Hour meter
- Tilt adjustable steering wheel
- Battery set
- Key switch
- Standard seat
- Electric horn
- Air cleaner clogging alarm
- Tilt circuit self-locking valve
- Cyclone air cleaner
- Brake
- Charging indication
- 2-piece selector valve
- WFOV mast
- Full hydraulic power steering
- Pointer type instrument cluster
- Turn signal light
- Backrest
- Engine choke
- Cable type parking brake
- Overhead air intake system
- LCD instrument cluster
- Backup light
- Direction switch
- Lift/tilt lever
- Handle
- Hydraulic return filter element
- Back-up buzzer
- Combination taillight
- Lift circuit governor valve
- Coolant temperature gauge
- Hydraulic suction filter element
- Side mirror
- Rain cover of overhead guard
- Drawbar pin
- Tool kit
- Hydraulic oil scale
- Light switch
- Durable rib tire
- Headlight
- Rubber pedal pad
- Oil pressure alarm

OPTIONS EQUIPMENT

- de shifter
- Deluxe seat
- Cab heater
- Solid tire
- Small fan
- Boom
- High exhaust pipe
- Muffler with spark arrester
- Dual air filter
- Windshield
- Lengthened forks
- Jib
- Rotating beacon
- Hook
- Lengthened fork cover
- Hinged forks
- User specified color
- 2(3)-section full free mast
- Cab
- 3-section full free mast
- Paper roll clamp

ENGINE TYPE SELECTION AND PARAMETERS

Manufacturer	Power type	Model	Number of cylinders	Bore x stroke mm	Total displacement L	Rated output/RPM Kw/r.p.m	Rated torque/RPM Nm/r.p.m	Emission standard	Applicable forklift truck					
									CPC42	CPC45	CPC45 off-road	CPCD45	CPC50	CPCD50S
Xinchang, China	Diesel	A498BPG	4	98 x 105	3.170	45/2500	205/1600-1800	Nationa Stage II						
Xinchang, China	Diesel	4D35G	4	98 x 115	3.460	48/2300	230/1600-1800	Nationa Stage II						
Quanchai, China	Diesel	4JR3ABG18	4	108 x 135	4.94	60/2200	320/1700	Nationa Stage II						
Xichai, China	Diesel	LR4B3-22	4	108 x 125	4.580	57/2200	305/1700	Nationa Stage II						
Perkins, UK	Diesel	1104D-44	4	105 x 127	5.334	55.9/2200	265/2200	EU stage III						
Mitsubishi, Japan	Diesel	S6S	6	94 x 120	4.996	57.4/2300	260/1700	EU stage III						
Quanchai, China	Diesel	QC4108	4	108 x 135	4.94	60/2200	320/1700	Nationa Stage II						
Xichai, China	Diesel	CA4110	4	110 x 125	4.75	61/2200	305/1500	Nationa Stage II						
Xinchang, China	Diesel	4D32ZG31	4	98 x 105	3.170	48/2300	250/1600-1800	Nationa Stage III						
Quanchai, China	Diesel	4C5	4	95 x 115	3.12	60/2200	300/1800	Nationa Stage III						
Xichai, China	Diesel	4DX23	4	102 x 118	3.857	60/2200	320/1400-1700	Nationa Stage III						

SPECIFICATION TABLE OF FORKS

Standard equipment LxWxT mm	Width W mm	Thickness T mm	Length series L mm									Mounting class
			770	920	1070	1220	1370	1520	1670	1820	1970	
1070x150x55	150	50	770	920	1070	1220	1370	1520	1670	1820	1970	III



contact@gmm-mg.com
Route du Pape Alarobia (face sanifer)
+261 32 03 111 33 / +261 32 03 111 34 / +261 32 03 111 36



Move forward

SPECIFICATIONS

Model		CPC42H	CPC45H	CPC45 off-road	CPCD45H	CPC50H	CPCD50H		
1	Power type	Diesel	Diesel	Diesel	Diesel	Diesel	Diesel		
2	Rated load	4200	4500	4500	4500	5000	5000		
3	Load center distance	500	500	500	500	500	500		
4	Lift height	3000	3000	3000	3000	3000	3000		
5	Free lift height	150	150	150	150	150	150		
6	Fork size	LxWxT	1070 x 150 x 50	1070 x 150 x 50	1070 x 150 x 50	1070 x 150 x 50	1070 x 150 x 50		
7	Mast tilt angle	FR/RR	8/10	8/10	10/10	6/12	8/10	6/12	
8	Minimum turning radius	mm	2750	2970	3170	2750	3050	2750	
9	Minimum right angle stacking aisle width	mm	4695	4915	5115	4695	4995	4695	
10	Minimum right angle aisle width	mm	2612	2678	2740	2612	2702	2612	
11	Minimum ground clearance	mm	150	150	250	150	150	150	
12	Height of overhead guard	mm	2265	2265	2430	2265	2265	2265	
13	Overhang(FR)	mm	547	547	686	547	547	547	
14	Maximum travel speed	Full load	20	20	25	19	18	19	
15	Maximum lift speed	Full load	355	465	403	500	375	500	
16	Maximum drawbar pull	Full load	37	41	42	40	51	40	
17	Gradeability	%	20	20	20	20	20	20	
18	Overall length	Without forks	3102	3202	3440	3102	3202	3102	
19	Overall width		1480	1480	1900	1480	1988	1480	
20	Fork height at maximum lift(with backrest)		4425	4425	4425	4425	4425	4425	
21	Mast height		2230	2230	2405	2230	2230	2230	
22	Tires	Front wheel	2-8.25-15-14PR	2-8.25-15-18PR	4-8.25-15-14PR	2-16.0/70-16PR	2-300-15-20PR	4-8.25-15-14PR	2-300-15-20PR
23		Rear wheel	2-7.00-12-12PR	2-7.00-12-12PR	2-7.00-12-12PR	2-8.25-12-12PR	2-7.00-12-12PR	2-7.00-12-12PR	2-7.00-12-12PR
24	Wheelbase	mm	2000	2100	2150	2000	2100	2000	
25	Tread	Front wheel/rear wheel	1182/1202	1182/1202	1368/1202	1460/1202	1182/1202	1182/1202	1182/1202
26	Service weight	Without load	6150	6220	6380	6550	6550	7000	6750
27	Battery	Voltage/capacity	V/Ah	24/80	24/80	24/80	24/80	24/80	24/80
28	Engine	Model	Xinchang 4D32ZG31		Quanchai 4C5	Xichai 4DX23	Quanchai 4C5	Xichai 4DX23	
29		Rated output	48/2300			60/2200			
30		Rated torque	250/1600-1800			300/1800	320/1400-1700	300/1800	320/1400-1700
31		Bore x stroke	96 x 105			95 x 115	102 x 118	95 x 115	102 x 118
32		Number of cylinders	4			4	4	4	4
33	Displacement	L		3.17	3.12	3.857	3.12	3.857	
34	Fuel tank capacity	L	90	110	130	90	110	90	
35	Transmissions(FWD/RWD)		2/2 Manual shift	3/2 Manual shift	2/2 Manual shift	2/2 Manual shift	2/2 Manual shift	2/1 Manual shift	
36	Operating pressure	Mpa			19.5				
37	Tire type(FR/RR)		Pneumatic	Pneumatic	Pneumatic	Pneumatic	Pneumatic	Pneumatic	
38	Number of wheels(FR/RR)	Pcs	2/2	2/2	4/2	2/2	4/2	2/2	
39	Lowering speed(full load)	mm/s	390	490	490	420	520	430	520
40	Lowering speed(no load)	mm/s	375	470	470	410	510	420	510
41	Axle load distribution(full load)(FR/RR)	kg	9580/1200	9440/980	9720/1020	10160/960	10340/960	10360/1340	10340/960
42	Axle load distribution(no load)(FR/RR)	kg	2820/3460	2660/3360	2920/3360	3180/3480	2700/3540	2800/4000	2700/3540

Calculation of minimum right angle stacking aisle width: Pallet size: 1100mmx1100mm, total clearance(FR/RR):100mm

DIMENSIONAL DRAWING

